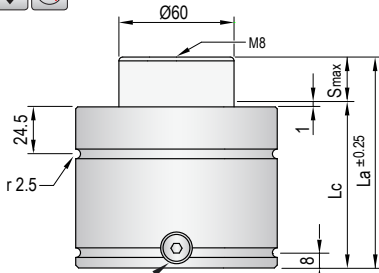
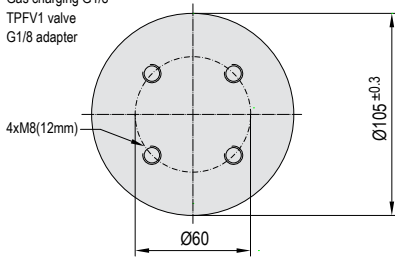


VDI SAFETY



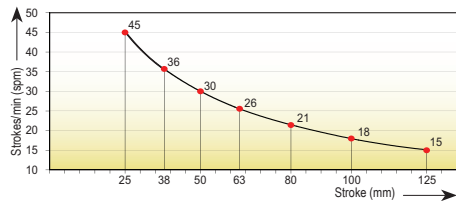
Gas charging G1/8
TPFV1 valve
G1/8 adapter



- Pressure medium **Nitrogen (N₂)**
- Max. charging pressure **175 Bar**
- Min. charging pressure **35 Bar**
- Rod seal area **28,27 cm²**
- Operating temperature **0°C - 80°C**
- Force increase by temperature **0,33 %/°C**
- Max. stem speed **1,2 m/s**
- Maintenance kit **Kit CT5000**

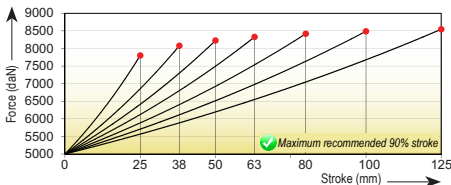


Maximum strokes / minute (at 20°C)

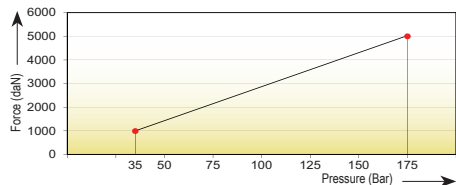


Code	Smax mm	La mm	Lc mm	Fa daN	90% F daN	100% Fc daN	P Bar	V l	kg		
TPCT 5000x25	25	110	85	5000 ±5% (20°C)	7395	7810	175 (20°C)	0,197	4,10		
TPCT 5000x38	38	136	98		7615	8085				0,282	4,70
TPCT 5000x50	50	160	110		7735	8235				0,361	4,90
TPCT 5000x63	63	186	123		7815	8335				0,446	5,40
TPCT 5000x80	80	220	140		7890	8425				0,557	5,75
TPCT 5000x100	100	260	160		7945	8495				0,688	5,90
TPCT 5000x125	125	310	185		7990	8555				0,852	7,05

Force/stroke ratio



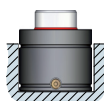
Initial force/charging pressure ratio



Assembly possibilities



Follow guidelines
Page 287



DROP-IN



SCREWS



FB 95